

**Installationsvejledning**  
**Montageanweisung**  
**Installation instruction**  
**Instructions d'installation**  
**Istruzioni di installazione**  
**Installatie- -instructies**  
**Instrucciones de instalación**  
**Asennusohjeet**

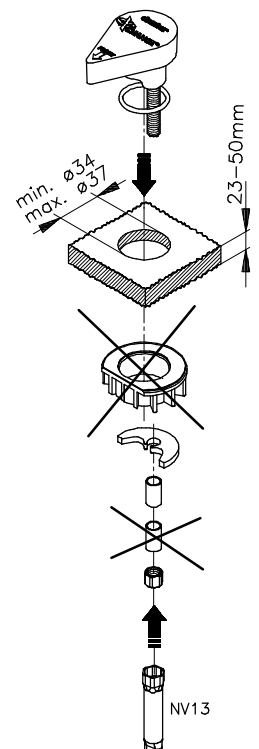
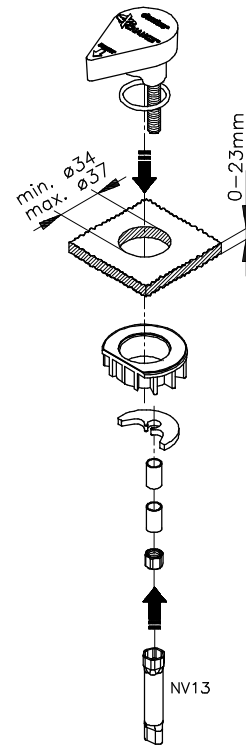
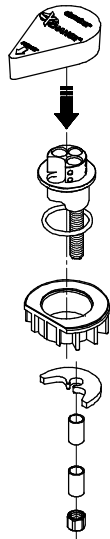
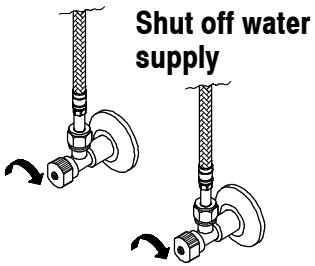
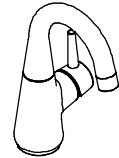
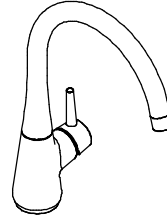
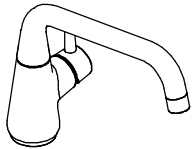
**damixa™**

Østbirkvej 2, 5240 Odense NØ, Denmark  
 Tel. +45 63 102 210  
 E-mail: damixa@fmm-mora.com  
 Homepage: www.damixa.com

10.16

20172.00

**Bell**



(a)

(b)

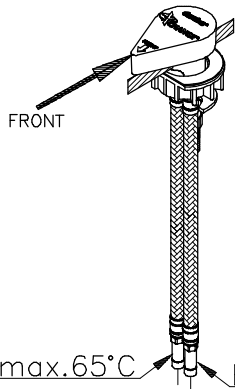
NV13

NV13

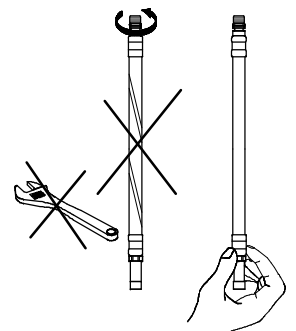
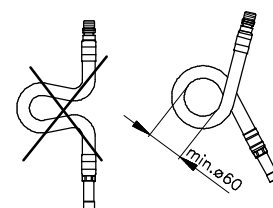
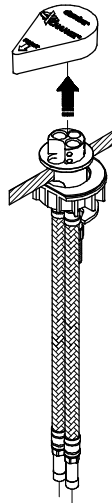
**A**

**B**

**C**



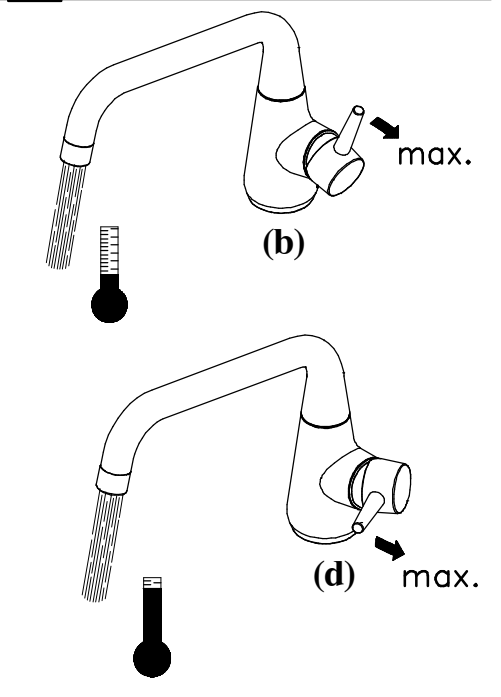
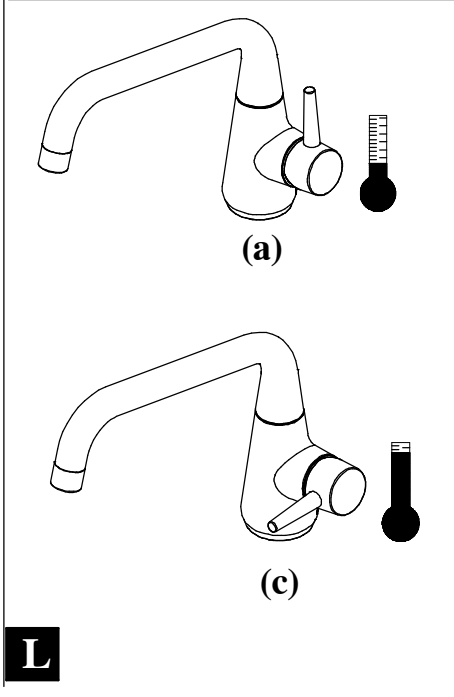
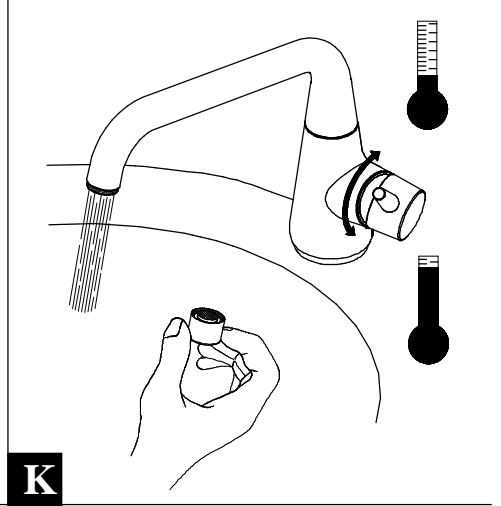
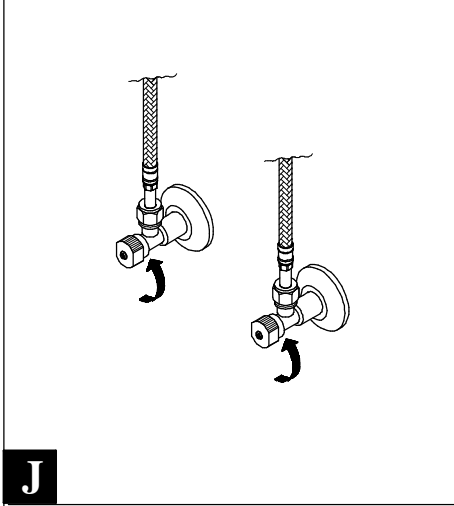
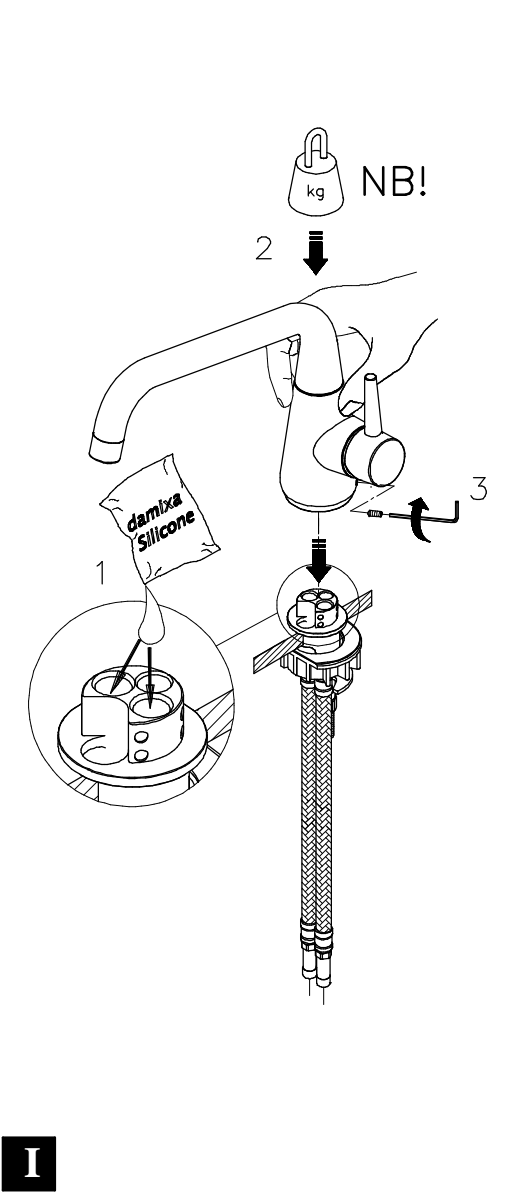
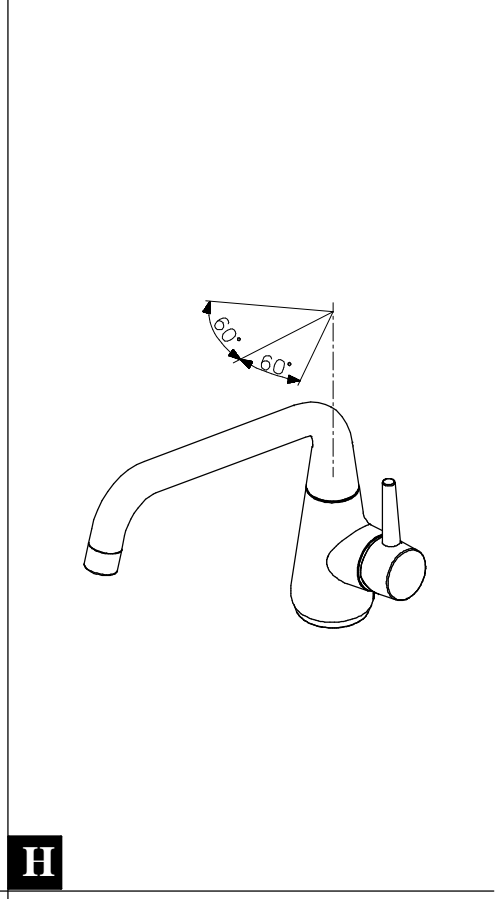
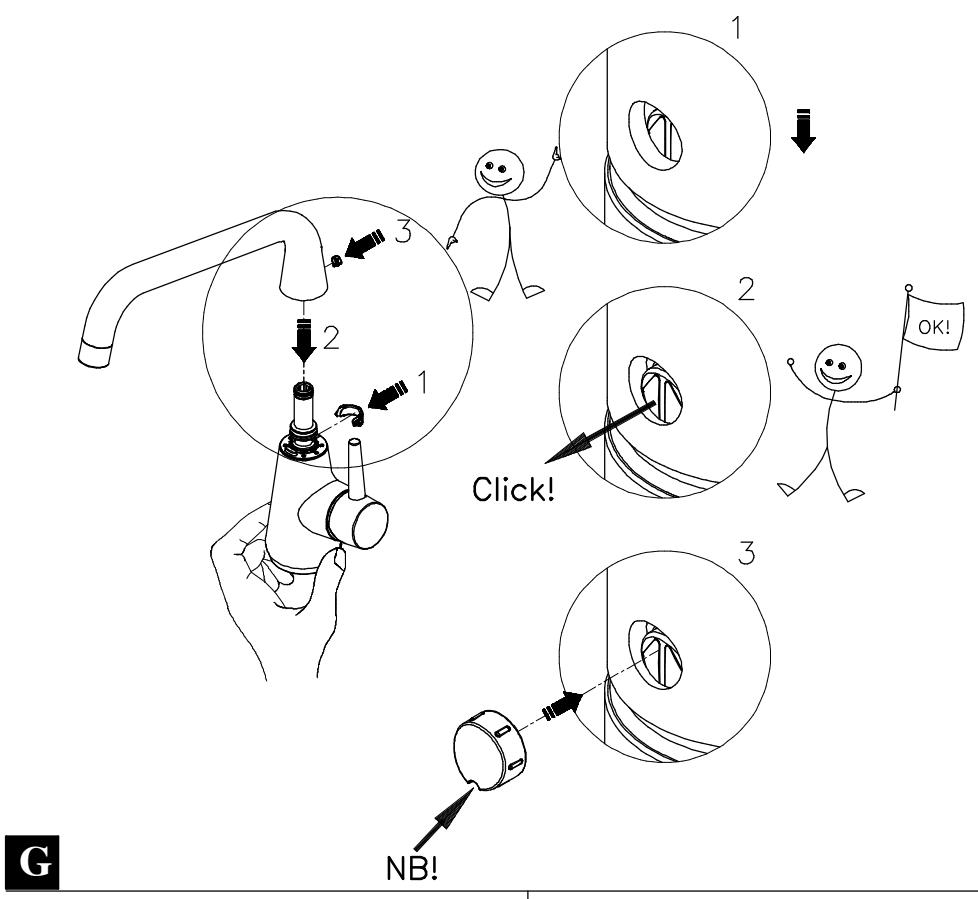
A,B: 50-1000 kPa (0.5-10 bar)

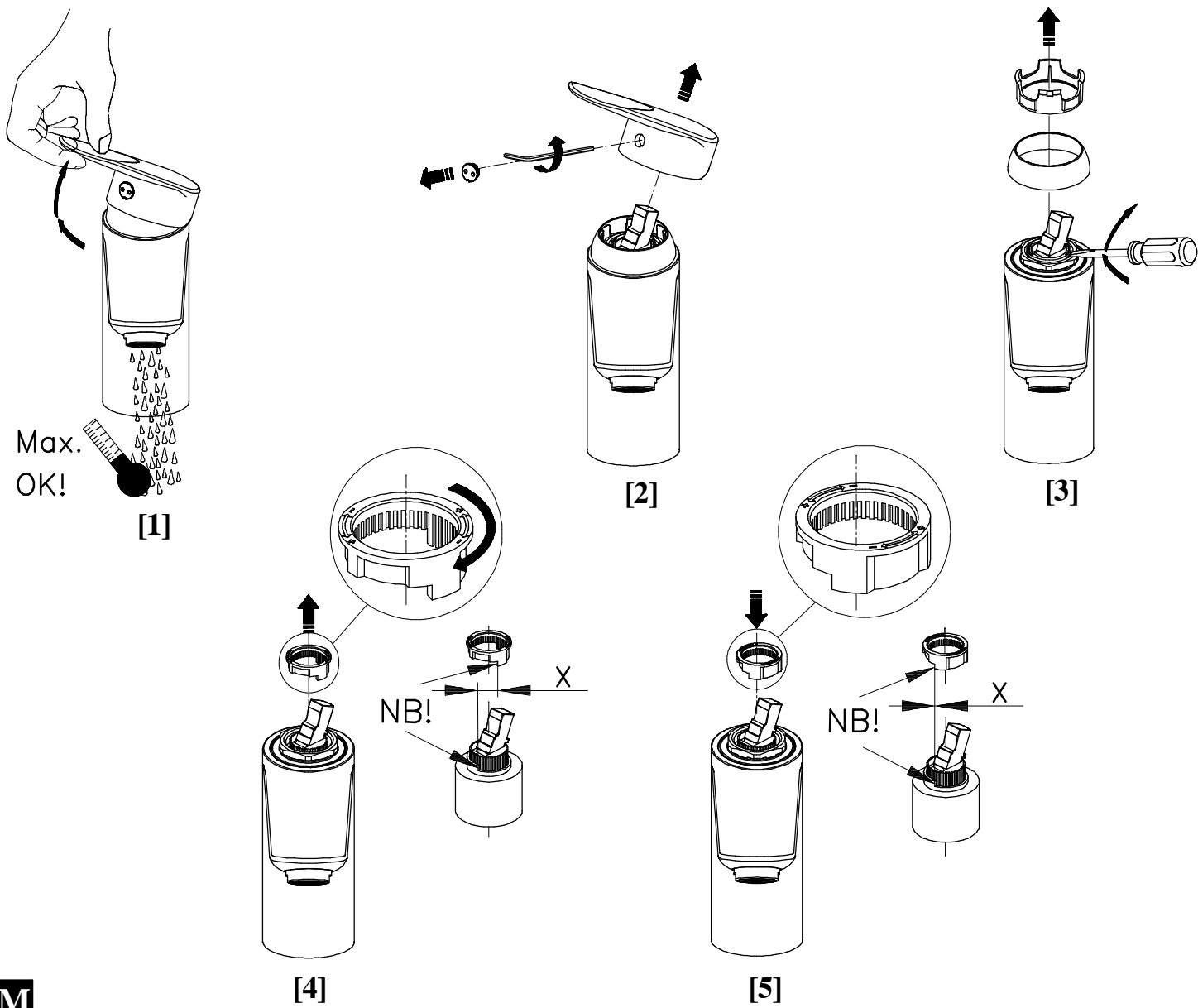


**D**

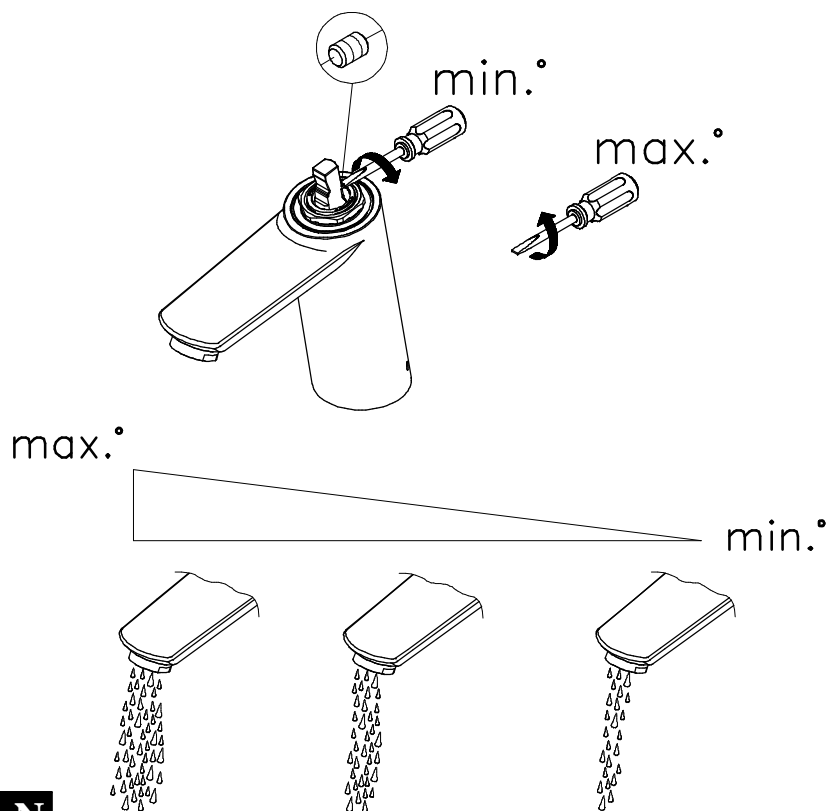
**E**

**F**

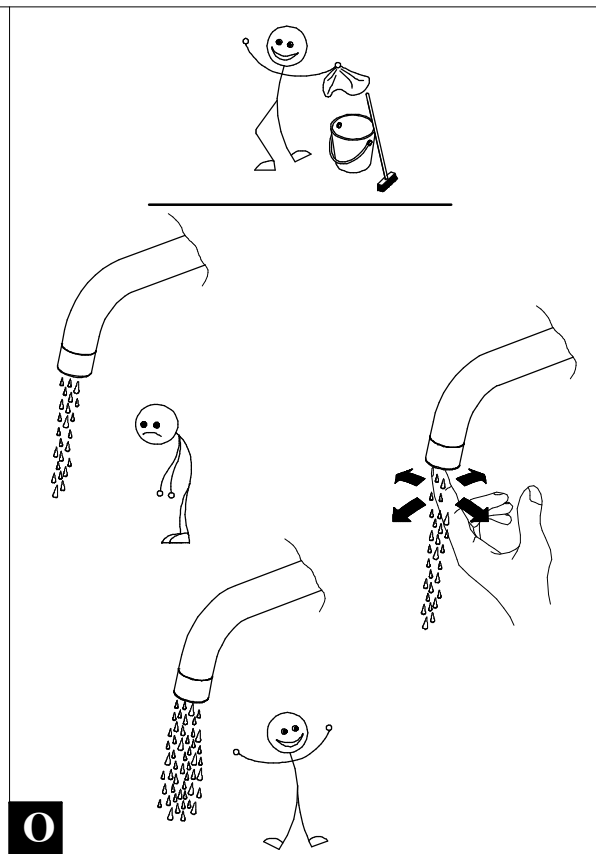




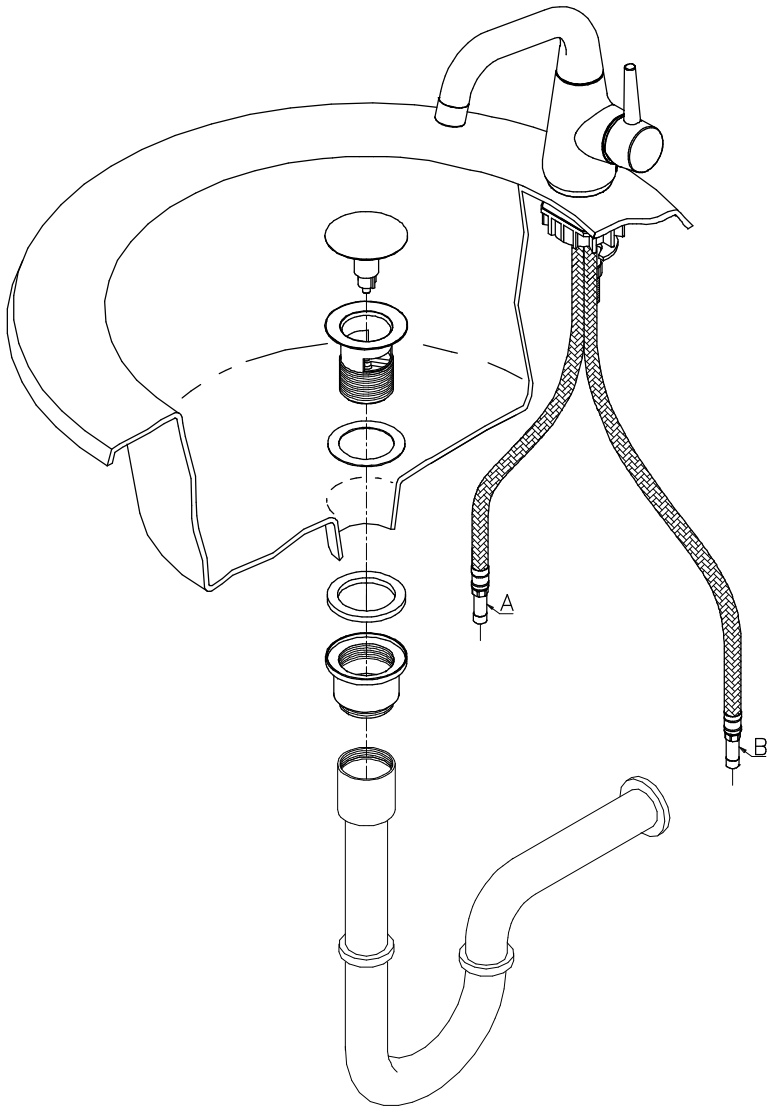
**M**



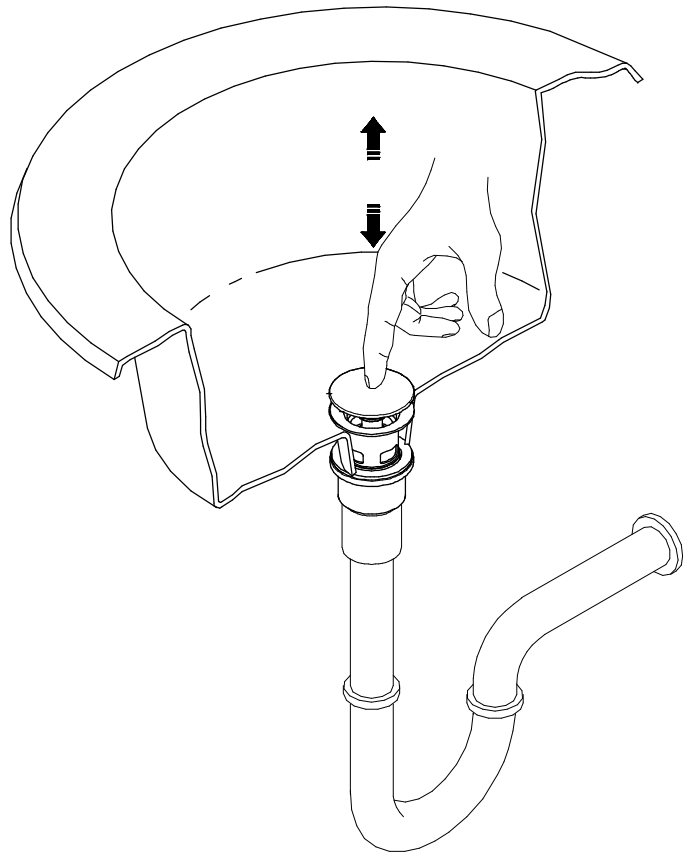
**N**



**O**



[1]



[2]